

Meet Copenhagen City



Monica Magnussen
Head of
International Affairs

Instagram: @meetcopenhagen
#meetcopenhagencity





Urban Planning





COPENHAGEN

CAPITAL OF DENMARK



INHABITANTS

City of Copenhagen
652.000

The metropolitan area
1.359.000

Greater Copenhagen
4.400.000

New inhabitants per month in Copenhagen
500

Average age
36 years

AREA

City of Copenhagen
92,4 km²

Inhabitants / km²
7.000



HOUSING

Homes
336.000

Public Housing
19,9 %

Apartments (2022)
93%

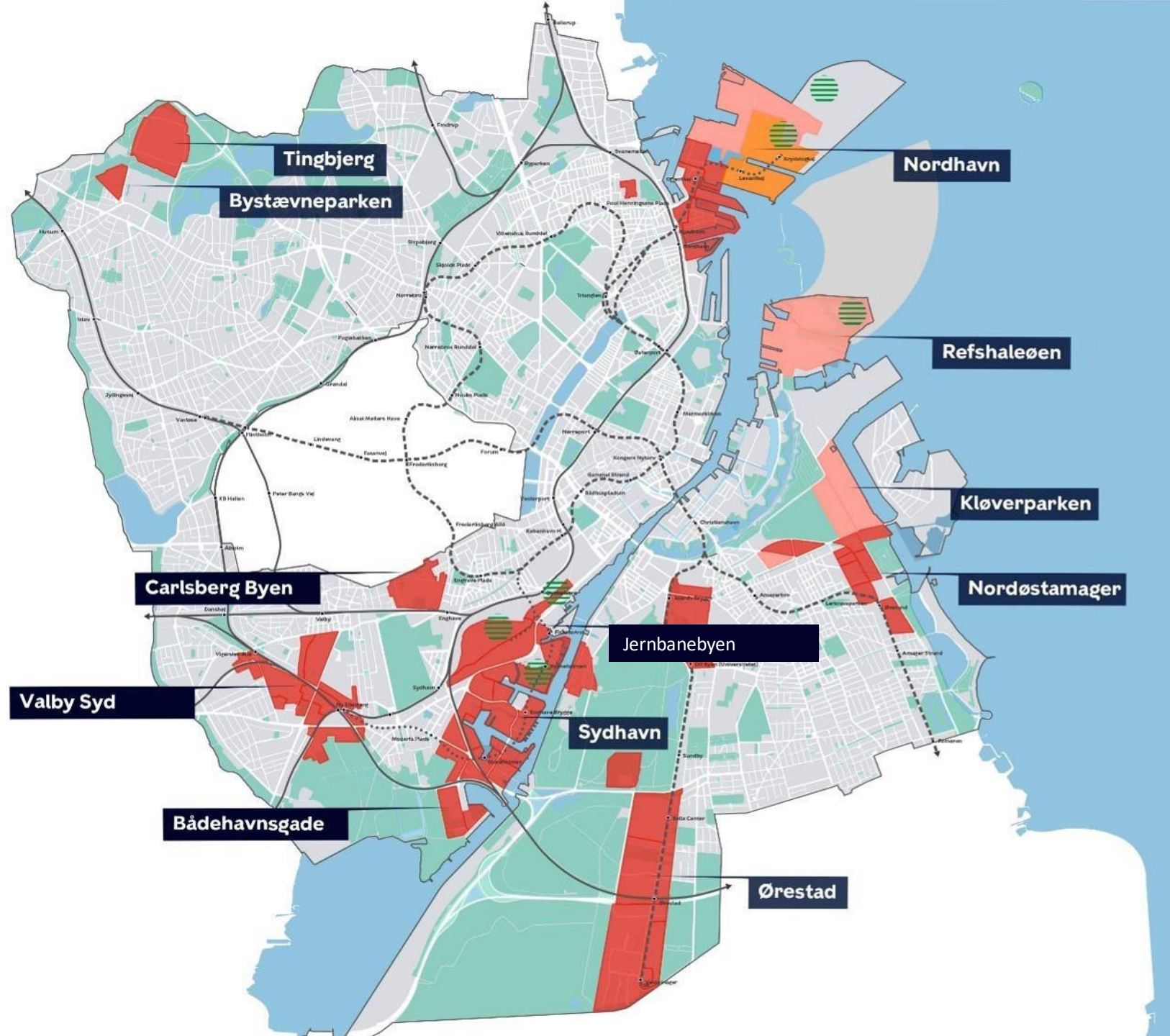
Housing per capita (2022)
41,3 m²



- 1st Part of the development (Started in 2019)
- 2nd Part of the development (Starts in 2025)
- Perspective areas
- Potential areas for new big green areas

New urban development areas

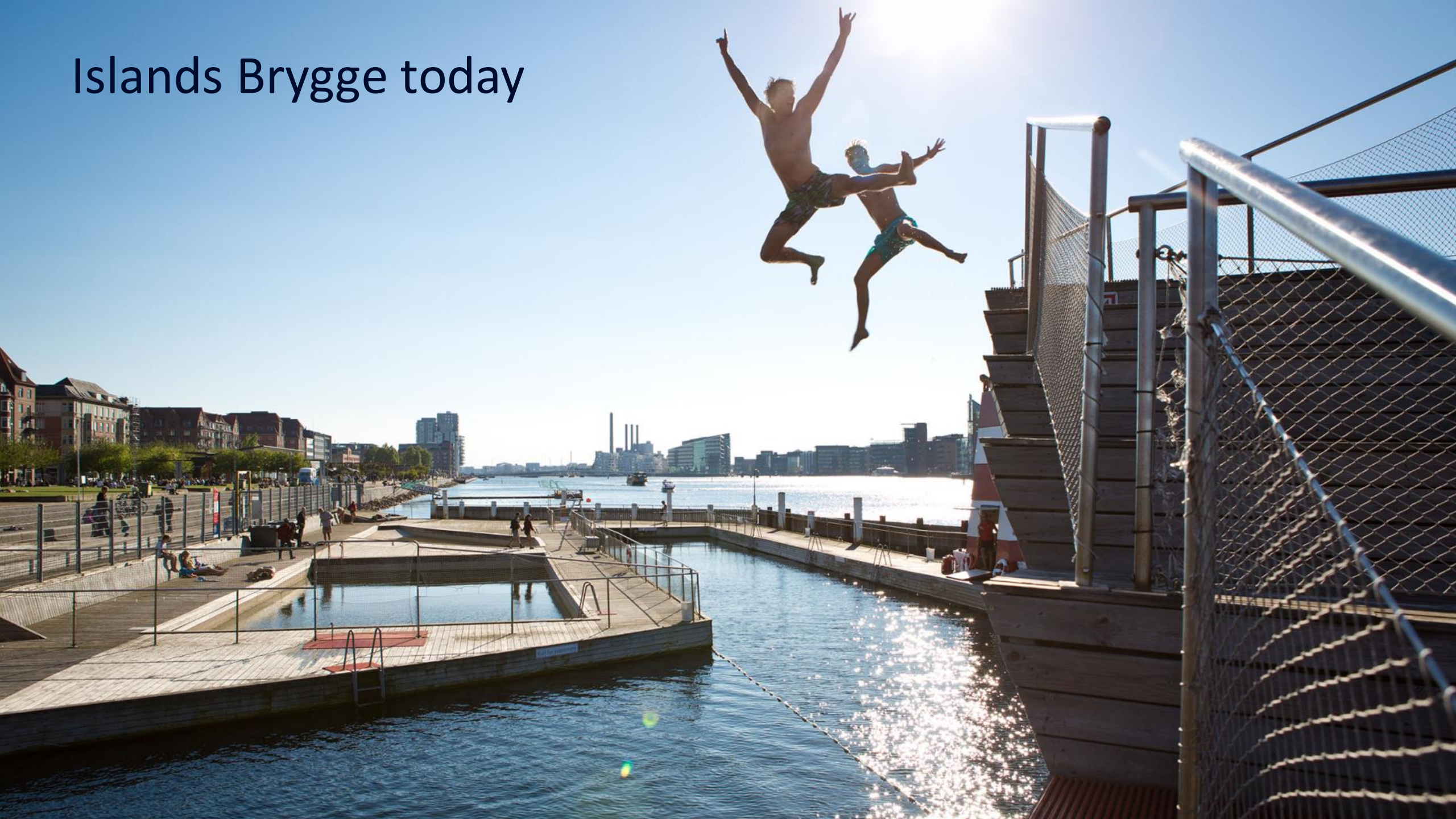
60.000
New
Homes



Islands Brygge 1970's



Islands Brygge today



Kalvebod Bølge

Blue Urban Space



Edge Zones





**Consider urban
life before
urban space**

**... and
urban space
before
buildings**

**...Planetary
boundaries**

School playgrounds



Climate

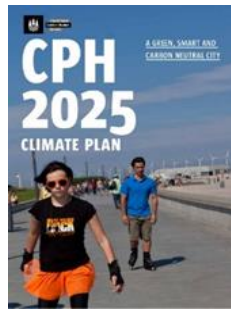


CPH2025 Climate Plan

1st period
2013-2016

2nd period
2017-2020

3rd period
2021-2025



2012



2014



2016



2018



2020



2021

Four pillars in the current Climate Plan



Energy Production

Goals for 2025

- District heating will be carbon neutral by 2025
- Electricity production is based on wind and biomass and will, in total, exceed the city's electricity consumption
- Plastic from households and companies will be sorted from waste
- Biogasification of organic waste

A need for flexibility





99% District Heating



Wind Energy - 560 MW

Energy Consumption

Goals for 2025

- 20% reduction in heat consumption
- 20% reduction in the electricity consumed by commercial and service companies
- 10% reduction in energy consumption in households

Partnerships are key

Energy Leap



Partners in Energy Leap

- Large Building Owners
- Property
- Property Managers
- Hotels
- Interest organizations
- HOFOR
- Copenhagen municipality

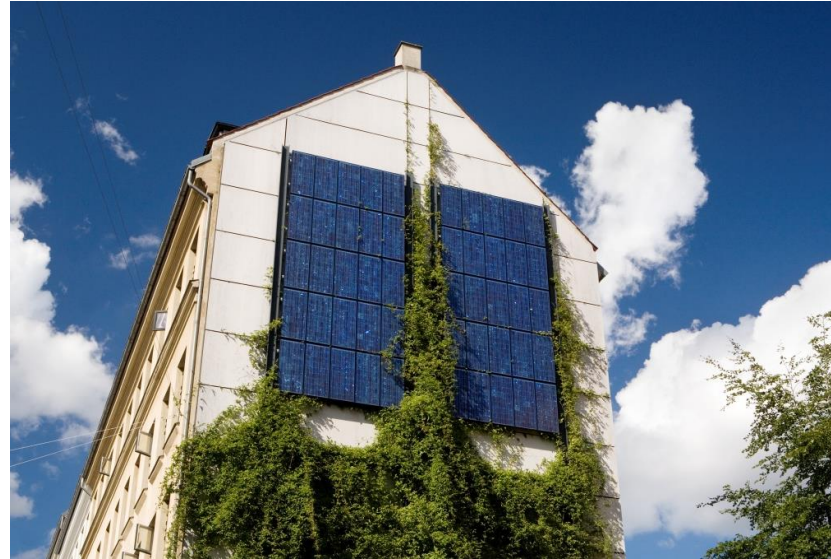


Facts about Energy Leap

- Represents 37.6% of the total building stock in Copenhagen. Corresponding to approx. 17.9 million sq.m.
- 52 partners

City Administration Initiatives

- Solar panels on buildings
- Food strategy
- Transportation
- Green procurement



Current Status



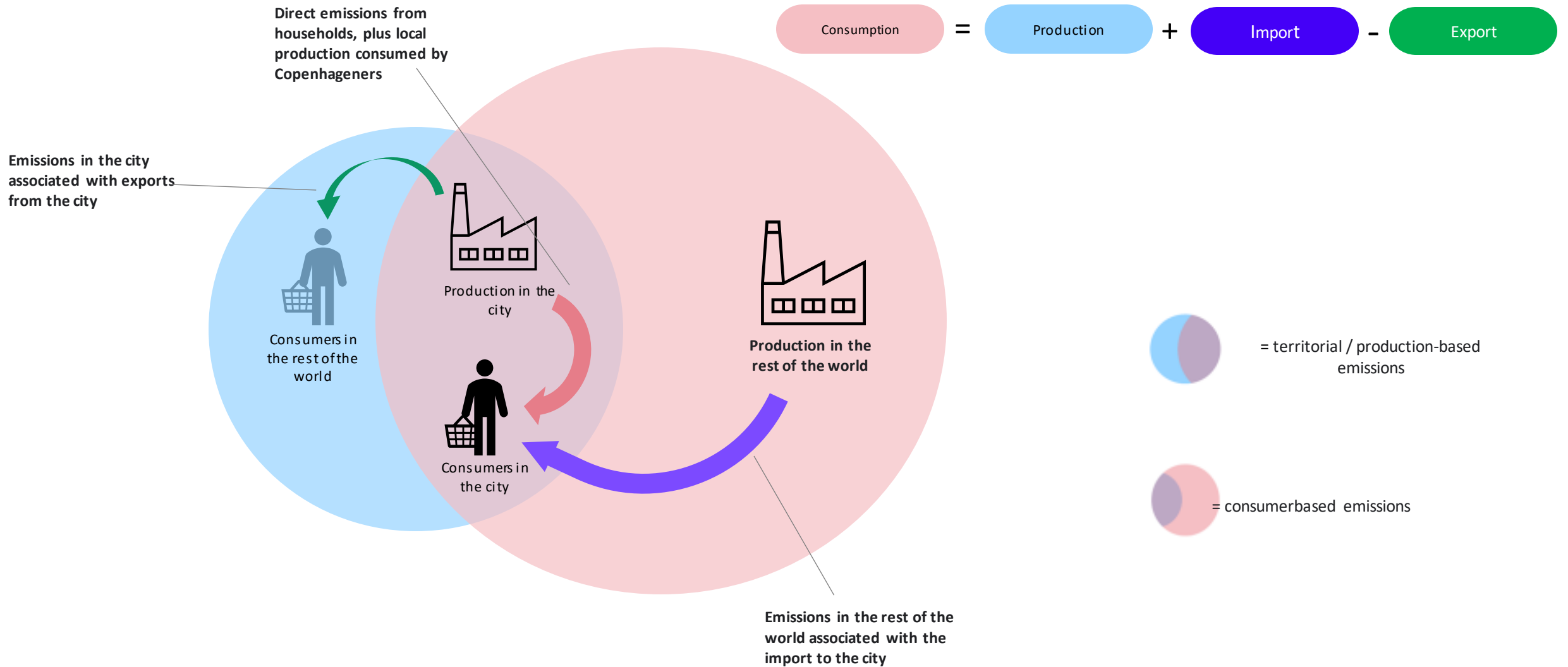
74% emission
reduction in 2022
compared
to 2010



Copenhagen Hill

Waste to Energy & Carbon Capture

Territorial and consumption-based emissions

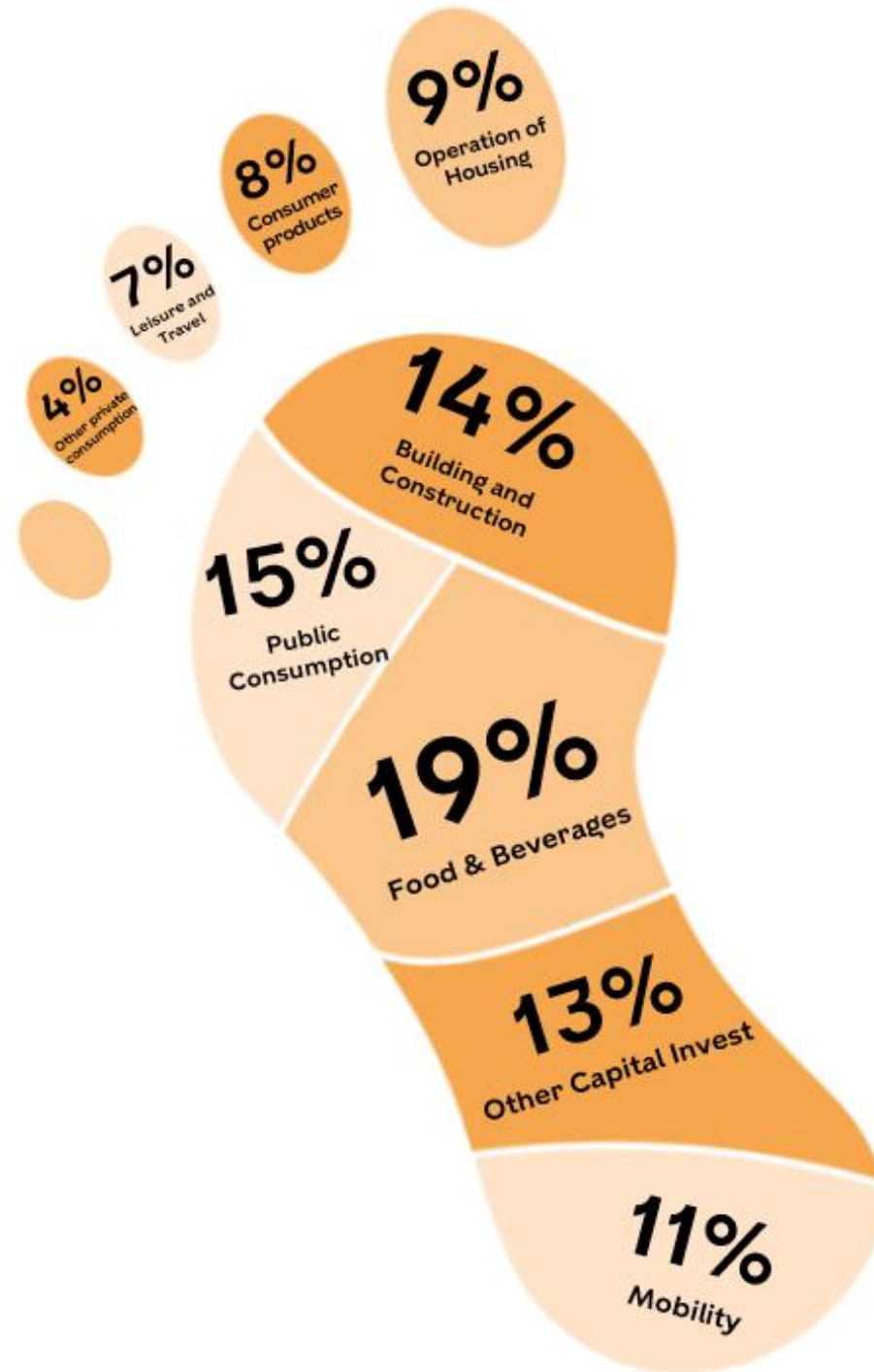


Copenhageners' consumption emissions

Almost 10 tonnes of CO2 are emitted per year for every Copenhagen resident

CONCITO: 13 tons per Dane

Earth overshoot day 2023 28 marts.



Targets for The Climate Plan 2035

Territorial emissions

Emission today (2021-data)

Approx. 1 ton per Copenhagener



Targets: Climate positivity (CCS) and the wish to reduce biomass

Consumption based emissions

Emission today (2019-data)

Approx. 10 ton per Copenhagener



Targets: A 50% reduction of CO2 emissions related to citizens' consumption in 2035

Targets: A 50% reduction of CO2 emissions from public procurement in 2030



FOOD, MOBILITY & HOUSING



Design for
diversity

Design for
sharing

Design for
disassembly



39% of the
global emission



WHAT IS A
GOOD LIFE?

WHO IS RESPONSIBLE
FOR THE CHANGE?

THE INDIVIDUAL?
THE SYSTEM?
THE CULTURE?



Mobility



Goals for 2025

75% of all trips in Copenhagen are on foot, by bike or public transport
50% of all trips to work or school by bike



Green Public Transport



New metro, buses and harbour buses running on biogas and electricity



Modal Split

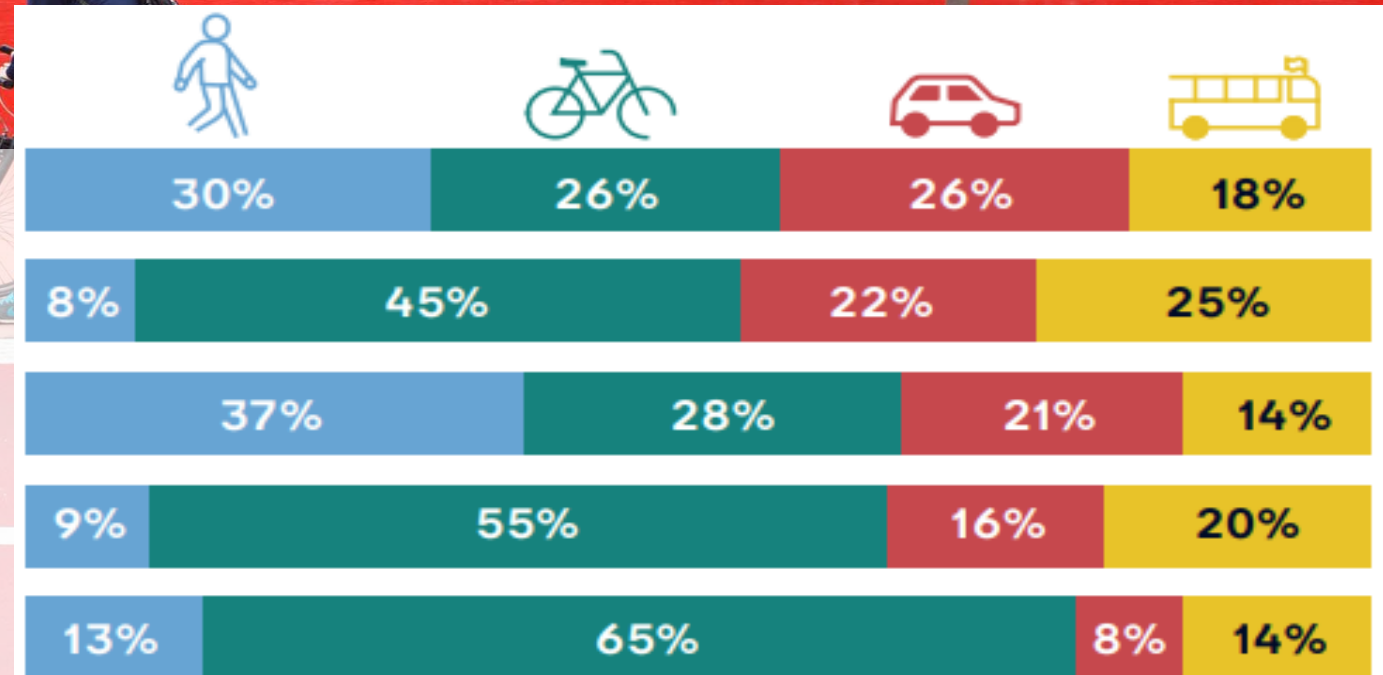
All trips to, from and in Copenhagen

Trips to workplaces and educations in Copenhagen

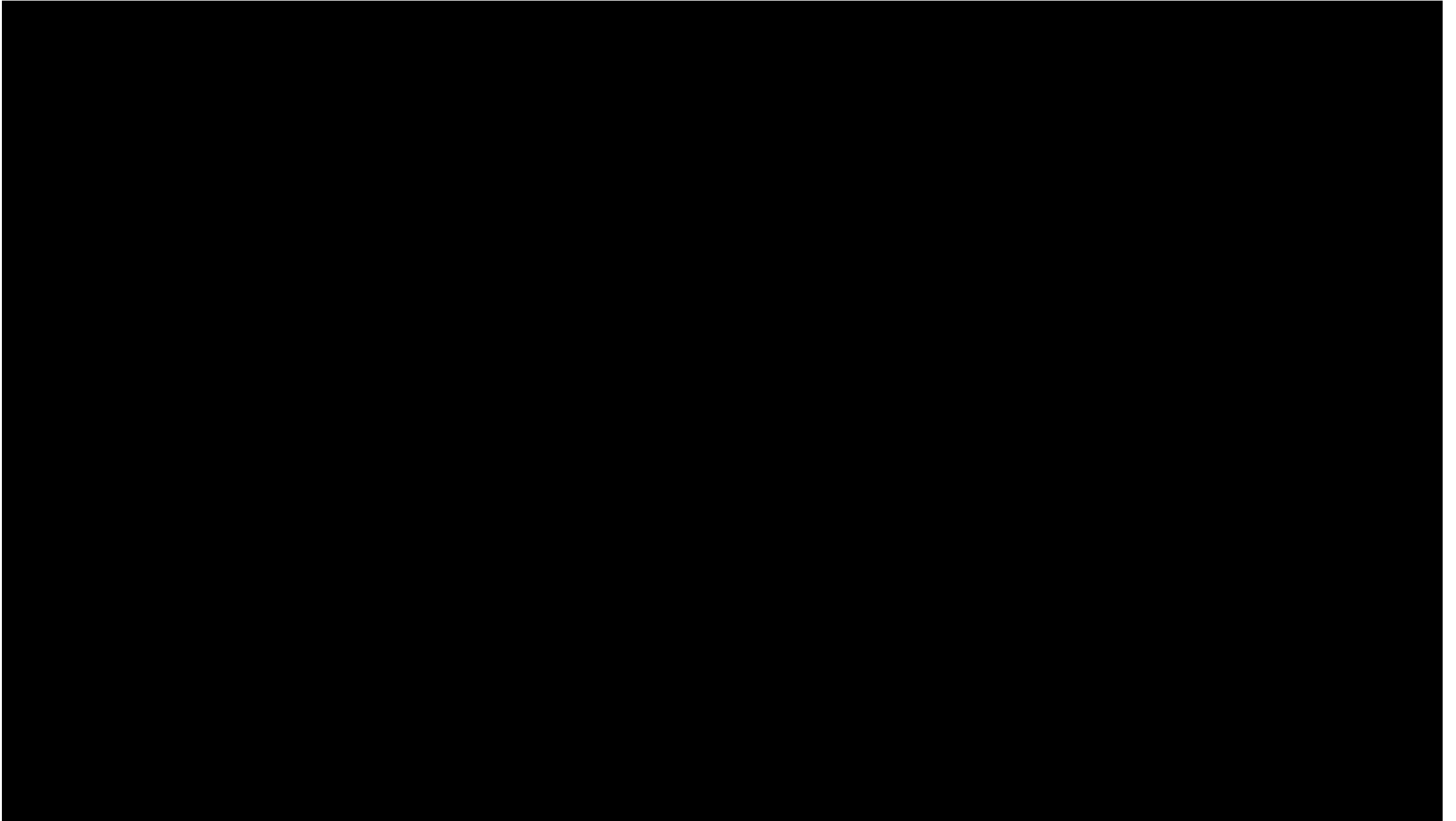
Copenhagener's trips

Copenhagener's trips to workplaces and educations

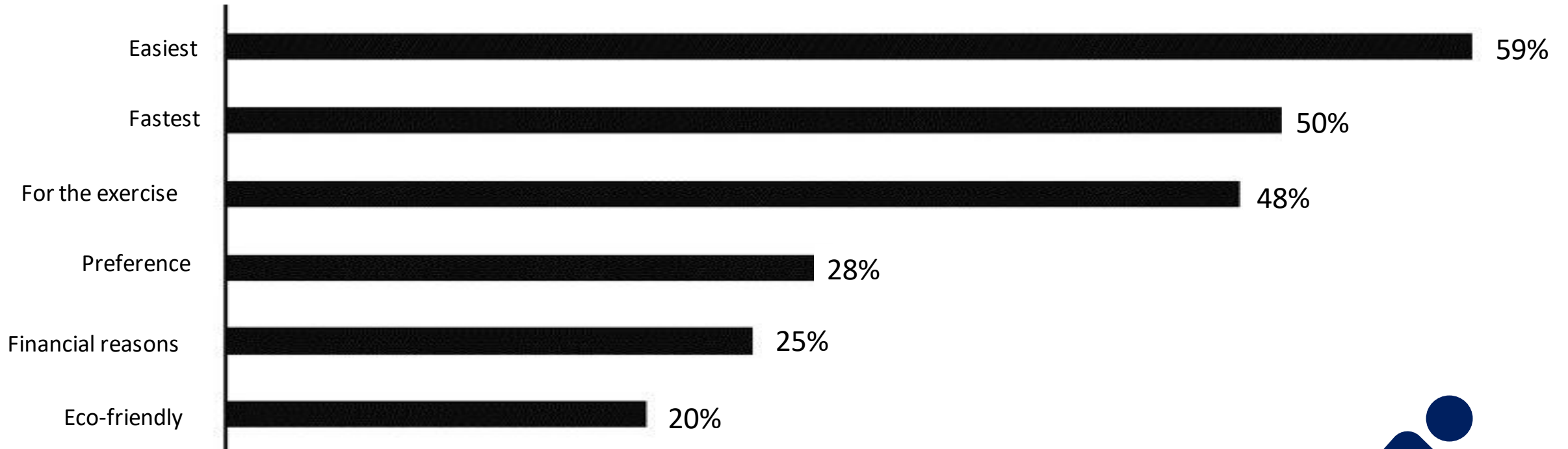
Copenhagener's trips to workplaces and educations in Copenhagen.



Bike flow in the morning rush hour



Reasons that Copenhageners choose to bicycle



Copenhageners' reasons for cycling in 2022



City of Cyclists

75%



1,500,000 km a day



42,600

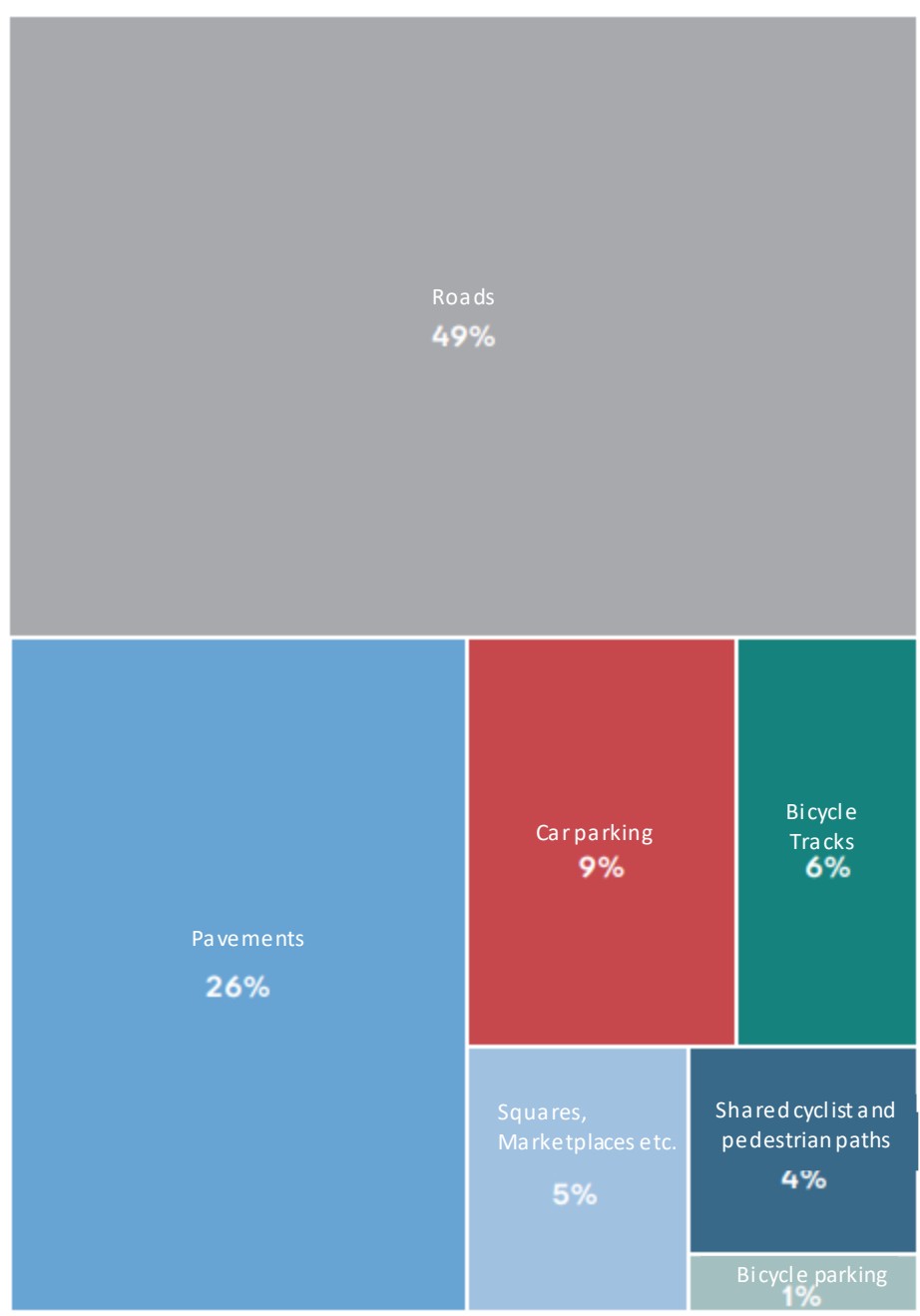



40.000



5:1

How the areas between the buildings in **Copenhagen** are distributed



An aerial photograph of Copenhagen, Denmark, showing a network of bridges and waterways. A prominent white bridge with a curved design spans across the water in the foreground. In the background, a larger bridge with multiple arches carries traffic. The city skyline is visible with various buildings, including a tall white skyscraper and a red construction crane. The water is dark blue, and there are several boats, including a white ferry and a small wooden boat. The sky is clear and blue.

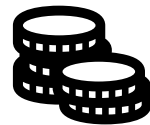
More than 380km of
cycling paths across
Copenhagen

24 bridges made for
cycling or walking
across all of
Copenhagen

Benefits of bicycles

€ 1,08

is saved by the Danish society per cycled km.



Cyclists have

higher degree of physical well-being, mental surplus and social contact when cycling.



Every time

an employee replaces the car with the bike, an average of five sick days are saved annually



41 %

lower risk of premature death compared to motorists and users of public transport.



Climate Adaptation, Storm Surge Protection and Urban Nature



More extreme weather



EUROCITIES AWARD VIDEO 2021



Karens Minde Aksen Winner of Best New Urban Space



Skt. Kjelds Plads

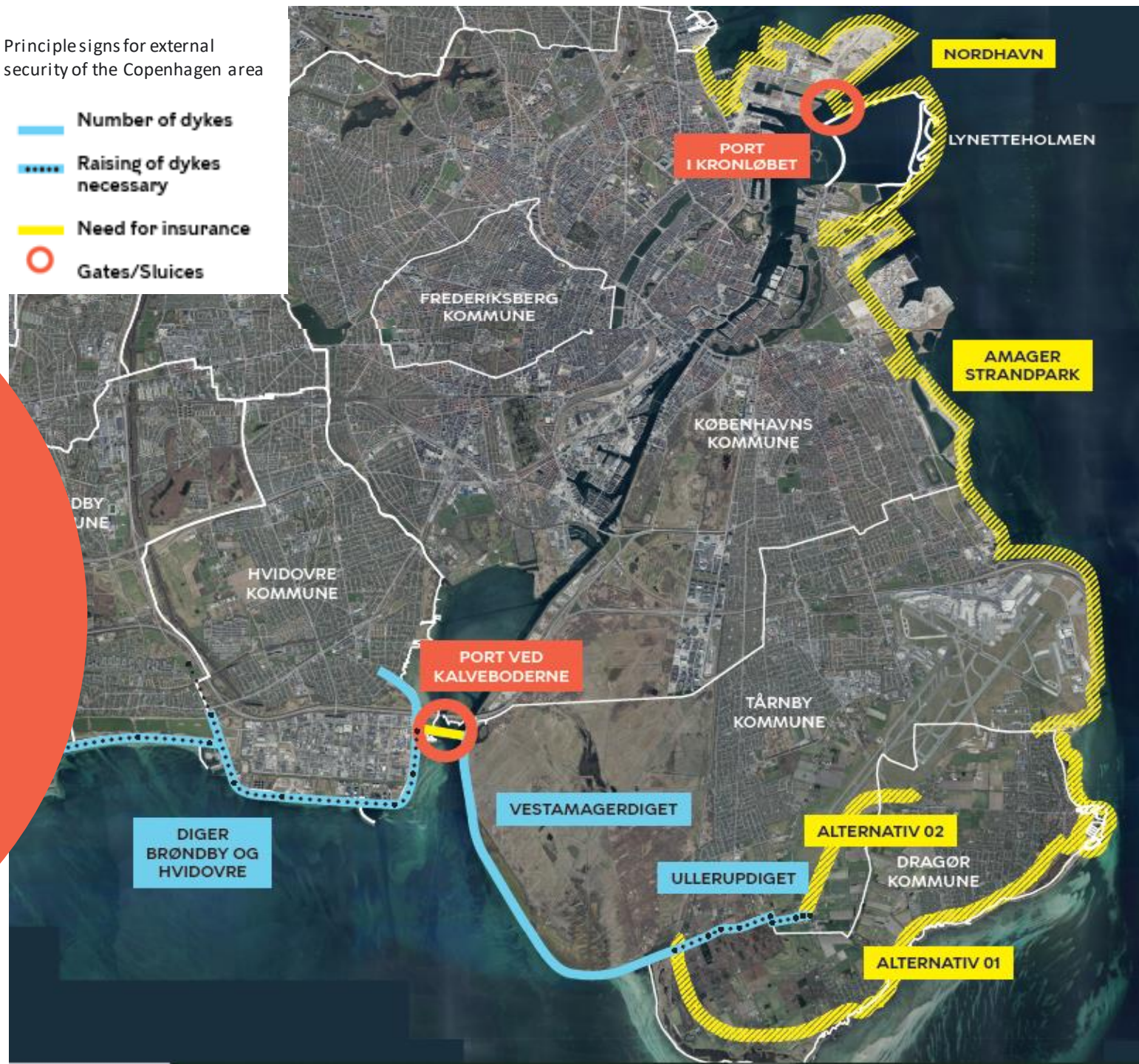


Storm Surge Protection

- First security in the south, then in the north
- Gate(s) at the Kalveboderne in the south and in the Kronløbet in the north
- Nature-based solutions
- Protection to 4.25 meters above water level in 100 years

Principle signs for external security of the Copenhagen area

-  Number of dykes
-  Raising of dykes necessary
-  Need for insurance
-  Gates/Sluices





Lynetteholmen

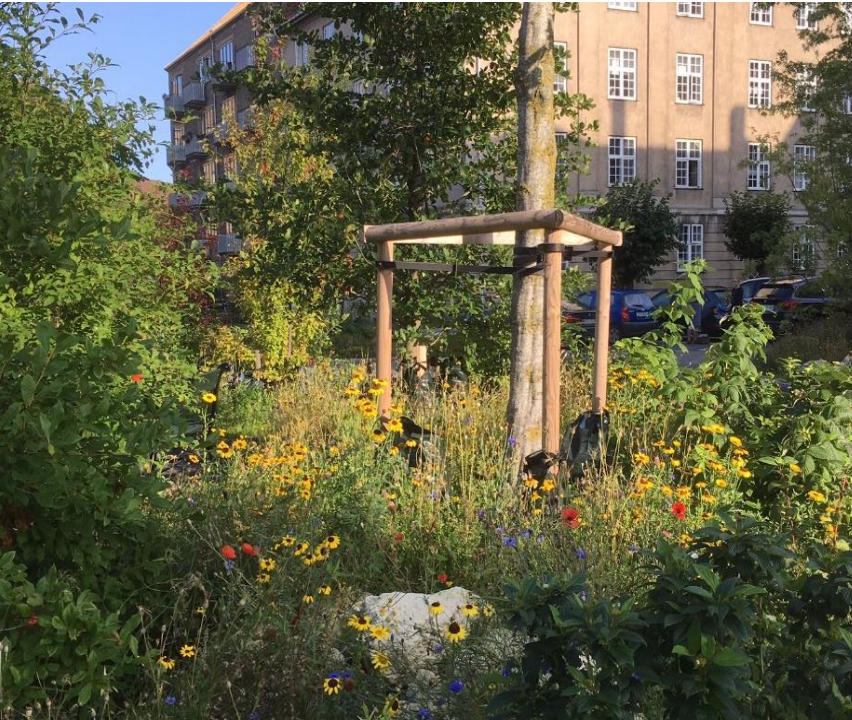
- Projected start 2035
- Landfill
- Protection from rising sea water
- 35.000 residents (25% affordable homes)
- 35.000 jobs
- 2,8 km²
- 400 soccer fields
- Sustainable mobility



Strategy for urban nature

Five quality parameters for urban nature:

- Biodiversity
- Climate adaptation
- Functionality
- Spatial quality
- Maintenance



THANK YOU

Monica Magnussen

cw06@kk.dk



@meetcopenhagen
#meetcopenhagencity

